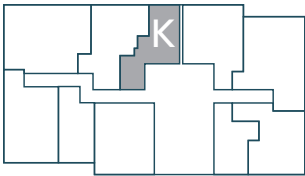
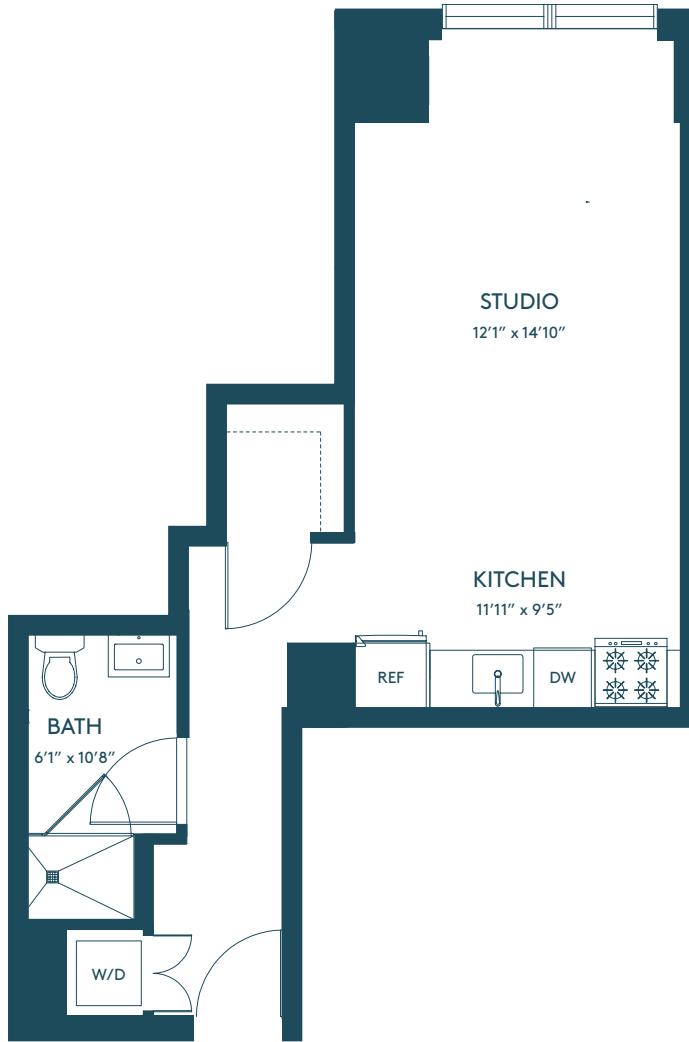




# 16-29TH FLOOR

# K

STUDIO  
1 BATH  
528 SQ. FT.



TOWER28NYC.COM | 42-12 28TH STREET, QUEENS, NY 11101  
718.696.0324 | INFO@TOWER28NYC.COM



The unit square footage, layout and room area dimensions on this floorplan are appropriate within reasonable tolerances and based on construction drawings. The unit when built will be subject to normal construction variances and tolerances. The square footage exceeds the usable floor area. Room and area dimensions are measured from the exposed surfaces to the enclosing walls, chase walls, shafts, cabinets and the like are not subtracted.