

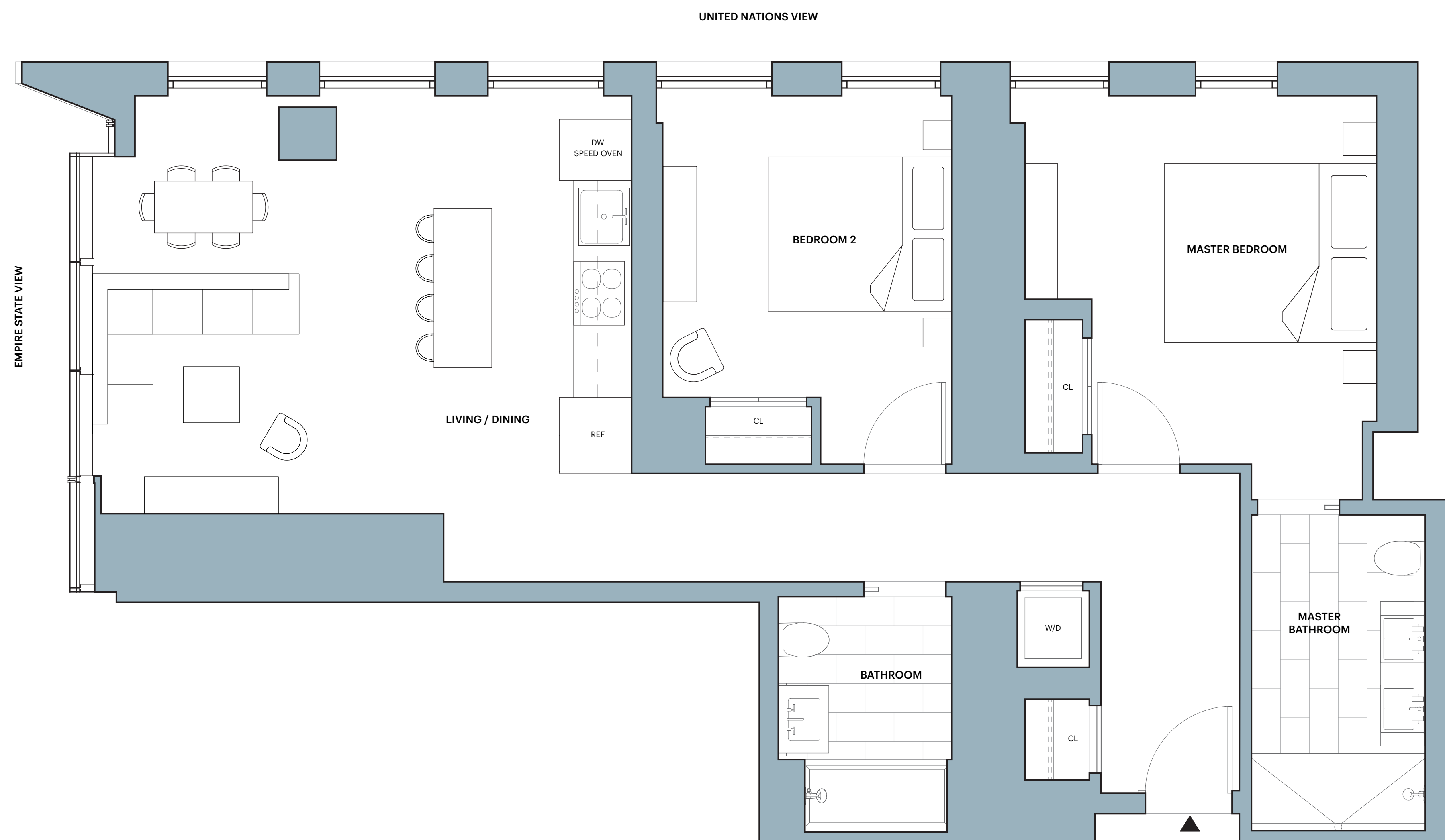
The Copper

W.3E - W.9E

WEST TOWER

2 Bedrooms

2 Bathrooms



Features:

- SHoP designed inside and out
- Ceiling heights up to 9' 7"
- Floor-to-ceiling windows with custom shades
- Custom oak floors
- Bosch washer and dryer
- Key drop

Kitchen:

- Miele appliances
- Speed oven
- Statuary marble countertop and backsplash
- SHoP-designed custom island
- Custom lighting

Master Bath:

- Statuary marble wall tile set in herringbone pattern
- Crocodile marble slab accent shower wall
- Rain showerhead and handshower
- Black pearl stone floor tile
- Custom European oak accents and vanity
- Custom light sconce with antique brass detailing
- Full length built-in medicine cabinet

Secondary Baths:

- Statuary marble floor wall tile with black herringbone tile accent
- Statuary marble floor
- Rain showerhead and handshower
- Custom European oak accents and vanity
- Custom light sconce with antique brass

Amenities & Services:

- Skybridge*:**
- 75' Skybridge lap pool & whirlpool
 - Skybridge lounge
 - Skybridge bar
 - Chef's catering kitchen
 - Juice and health bar
 - Children's playroom
 - Empire studio

Copper Tone*:

- Marble Hammam with plunge pool
- Private spa and treatment rooms
- Double-height fitness center with climbing wall overlooking city skyline
- Yoga and Pilates studio
- Personal training available
- Dynamic-energy studio
- Private locker rooms

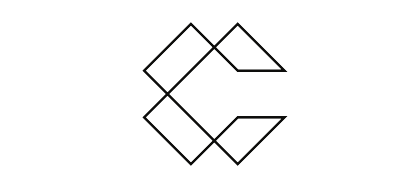
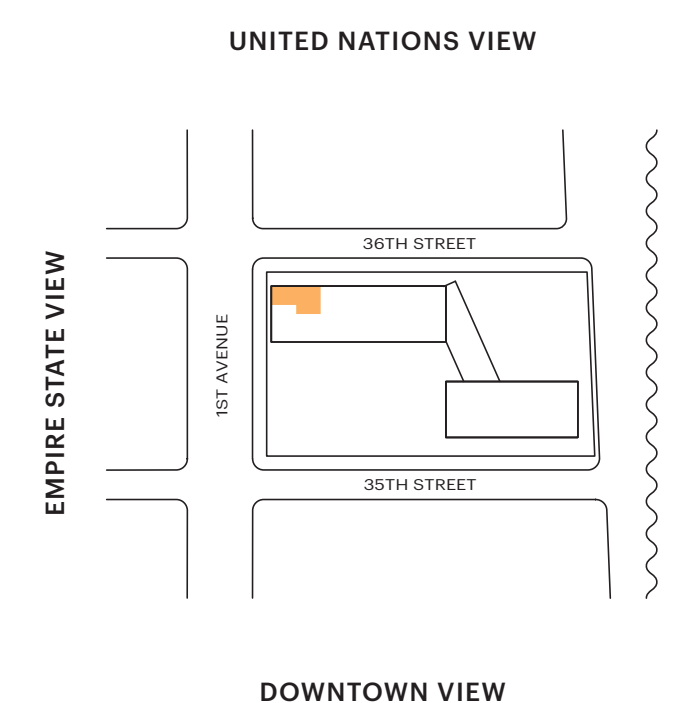
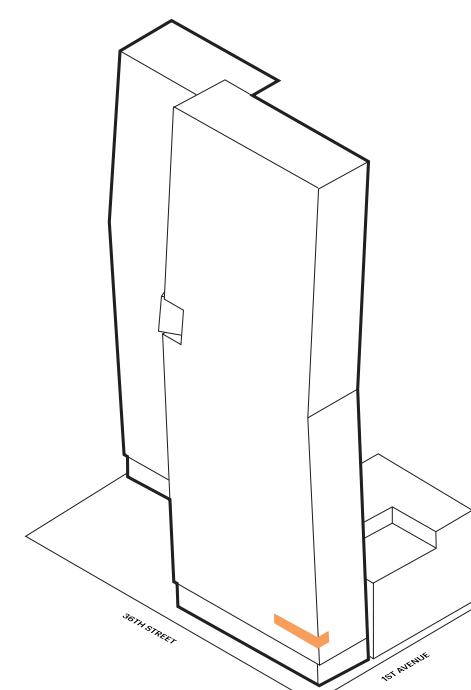
Copper Top*:

- Landscaped rooftop with infinity pool and outdoor shower
- Sky bar and open air lounge
- Rooftop dining and grilling
- Flexible private event space

On the Ground:

- Landscaped park and fountain
- Curated marketplace and restaurant
- The Underground Speakeasy
- Virtual concierge service
- Sheltered porte cochère and on-site parking with valet services
- Bicycle storage
- Resident storage

*Membership information available upon request



THE COPPER

THECOPPER.COM

ALL DIMENSIONS ARE APPROXIMATE AND SUBJECT TO NORMAL CONSTRUCTION VARIANCES AND TOLERANCES.

