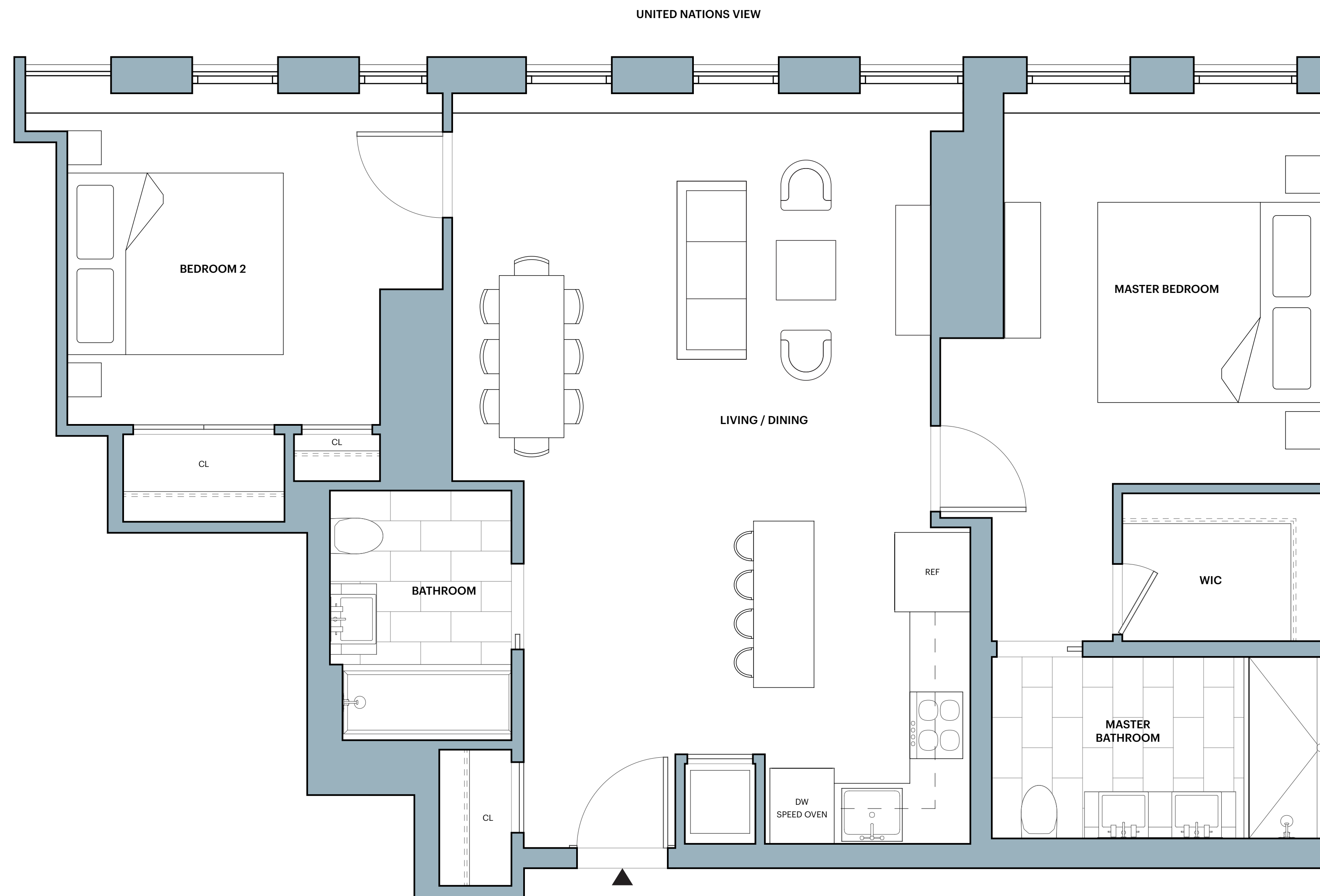


# The Copper

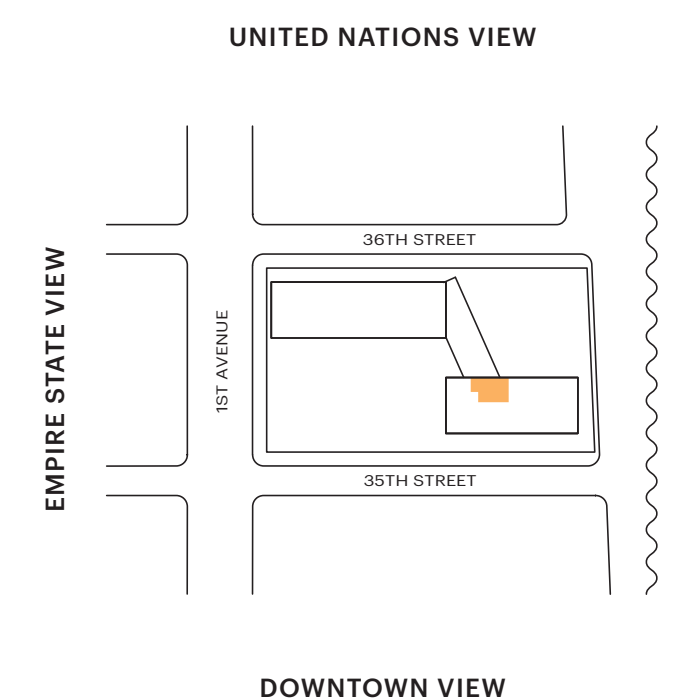
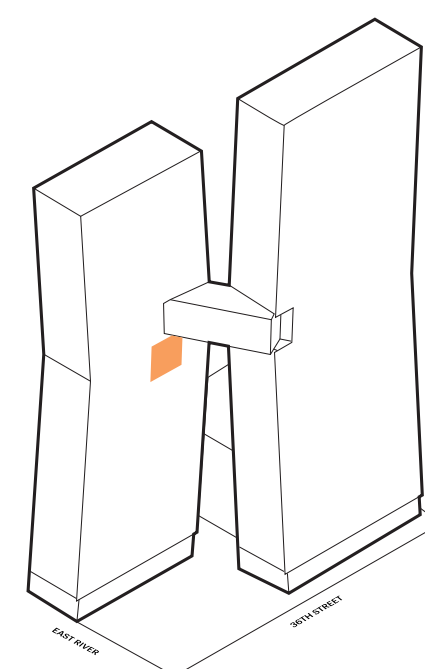
## E.23J - E.26J

EAST TOWER

2 Bedrooms  
2 Bathrooms



- Features:**
- SHoP designed inside and out
  - Ceiling heights up to 9' 7"
  - Floor-to-ceiling windows with custom shades
  - Custom oak floors
  - Bosch washer and dryer
  - Key drop
- Kitchen:**
- Miele appliances
  - Speed oven
  - Statuary marble countertop and backsplash
  - SHoP-designed custom island
  - Custom lighting
- Master Bath:**
- Statuary marble wall tile set in herringbone pattern
  - Crocodile marble slab accent shower wall
  - Rain showerhead and handshower
  - Black pearl stone floor tile
  - Custom European oak accents and vanity
  - Custom light sconce with antique brass detailing
  - Full length built-in medicine cabinet
- Secondary Baths:**
- Statuary marble floor wall tile with black herringbone tile accent
  - Statuary marble floor
  - Rain showerhead and handshower
  - Custom European oak accents and vanity
  - Custom light sconce with antique brass
- Amenities & Services:**
- Skybridge\*:**
- 75' Skybridge lap pool & whirlpool
  - Skybridge lounge
  - Skybridge bar
  - Chef's catering kitchen
  - Juice and health bar
  - Children's playroom
  - Empire studio
- Copper Tone\*:**
- Marble Hammam with plunge pool
  - Private spa and treatment rooms
  - Double-height fitness center with climbing wall overlooking city skyline
  - Yoga and Pilates studio
  - Personal training available
  - Dynamic-energy studio
  - Private locker rooms
- Copper Top\*:**
- Landscaped rooftop with infinity pool and outdoor shower
  - Sky bar and open air lounge
  - Rooftop dining and grilling
  - Flexible private event space
- On the Ground:**
- Landscaped park and fountain
  - Curated marketplace and restaurant
  - The Underground Speakeasy
  - Virtual concierge service
  - Sheltered porte cochère and on-site parking with valet services
  - Bicycle storage
  - Resident storage
- \*Membership information available upon request



  
 THE COPPER  
 THECOPPER.COM

ALL DIMENSIONS ARE APPROXIMATE AND SUBJECT TO NORMAL CONSTRUCTION VARIANCES AND TOLERANCES.

  
 M.N.S.  
 REAL ESTATE  
 NYC