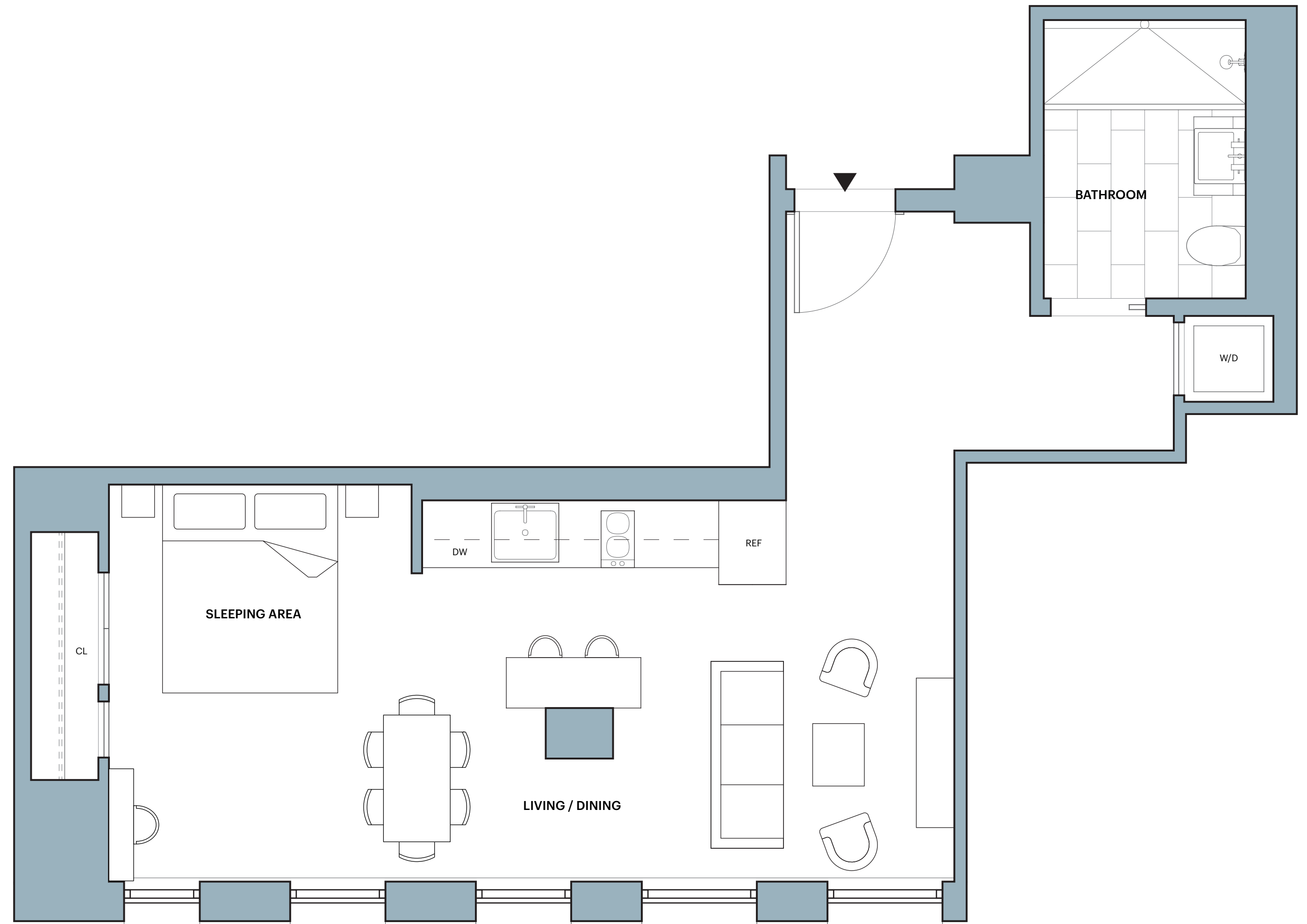


# The Copper

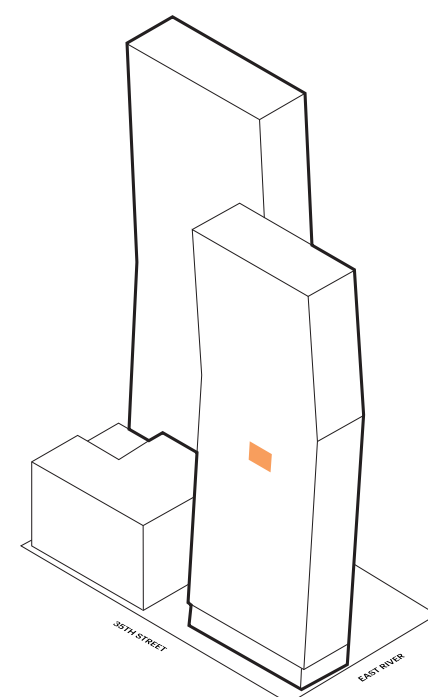
## E.21E - E.22E

### EAST TOWER

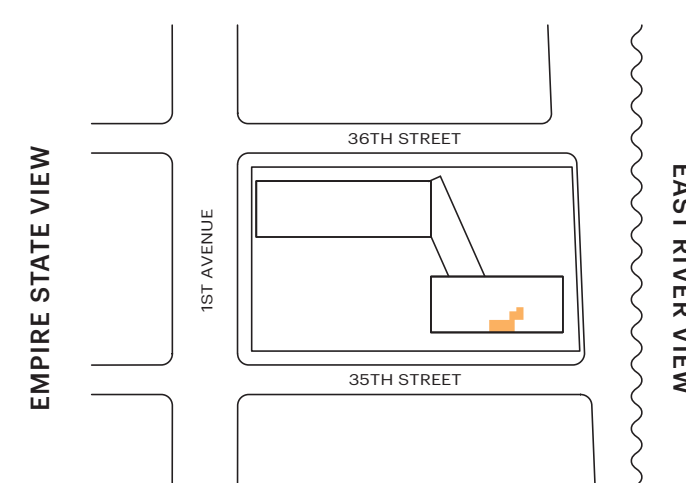
### Studio 1 Bathroom



DOWNTOWN VIEW



UNITED NATIONS VIEW



DOWNTOWN VIEW

**Features:**

- SHoP designed inside and out
- Ceiling heights up to 9' 7"
- Floor-to-ceiling windows with custom shades
- Custom oak floors
- Bosch washer and dryer
- Key drop

**Kitchen:**

- Miele appliances
- Speed oven
- Statuary marble countertop and backsplash
- SHoP-designed custom island
- Custom lighting

**Master Bath:**

- Statuary marble wall tile set in herringbone pattern
- Crocodile marble slab accent shower wall
- Rain showerhead and handshower
- Black-pearl stone floor tile
- Custom European oak accents and vanity
- Custom light sconce with antique brass detailing
- Full length built-in medicine cabinet

**Amenities & Services:**

- Skybridge\*:**
- 75' Skybridge lap pool & whirlpool
  - Skybridge lounge
  - Skybridge bar
  - Chef's catering kitchen
  - Juice and health bar
  - Children's playroom
  - Empire studio

**Copper Tone\*:**

- Marble Hammam with plunge pool
- Private spa and treatment rooms
- Double-height fitness center with climbing wall overlooking city skyline
- Yoga and Pilates studio
- Personal training available
- Dynamic-energy studio
- Private locker rooms

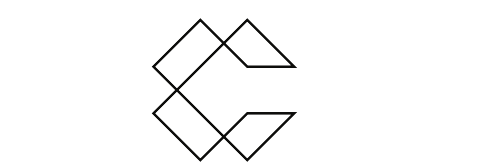
**Copper Top\*:**

- Landscaped rooftop with infinity pool and outdoor shower
- Sky bar and open air lounge
- Rooftop dining and grilling
- Flexible private event space

**On the Ground:**

- Landscaped park and fountain
- Curated marketplace and restaurant
- The Underground Speakeasy
- Virtual concierge service
- Sheltered porte cochère and on-site parking with valet services
- Bicycle storage
- Resident storage

\*Membership information available upon request



THE COPPER

THECOPPER.COM

ALL DIMENSIONS ARE APPROXIMATE AND SUBJECT TO NORMAL CONSTRUCTION VARIANCES AND TOLERANCES.

