

# American Copper

## W.30D - W.40D

### WEST TOWER

#### Studio 1 Bathroom

##### Features:

- SHoP designed inside and out
- Ceiling heights up to 9' 7"
- Floor-to-ceiling windows with custom shades
- Custom oak floors
- Bosch washer and dryer
- Key drop

##### Kitchen:

- Miele appliances
- Speed oven
- Statuary marble countertop and backsplash
- SHoP-designed custom island
- Custom lighting

##### Master Bath:

- Statuary marble wall tile set in herringbone pattern
- Crocodile marble slab accent shower wall
- Rain showerhead and handshower
- Black-pearl stone floor tile
- Custom European oak accents and vanity
- Custom light sconce with antique brass detailing
- Full length built-in medicine cabinet

##### Amenities & Services:

###### Skybridge\*:

- 75' Skybridge lap pool & whirlpool
- Skybridge lounge
- Skybridge bar
- Chef's catering kitchen
- Juice and health bar
- Children's playroom
- Empire studio

###### Copper Tone\*:

- Marble Hammam with plunge pool
- Private spa and treatment rooms
- Double-height fitness center with climbing wall overlooking city skyline
- Yoga and Pilates studio
- Personal training available
- Dynamic-energy studio
- Private locker rooms

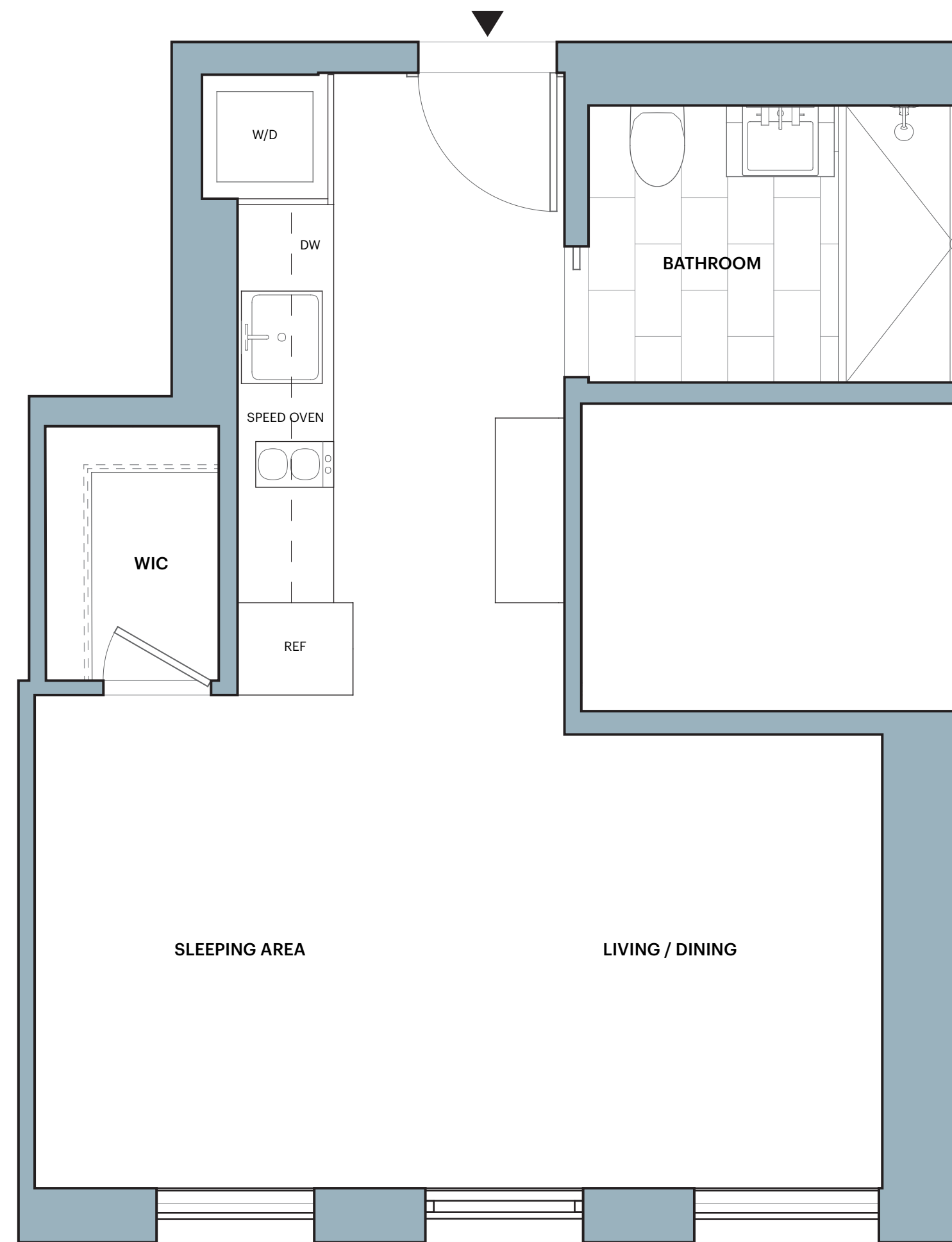
###### Copper Top\*:

- Landscaped rooftop with infinity pool and outdoor shower
- Sky bar and open air lounge
- Rooftop dining and grilling
- Flexible private event space

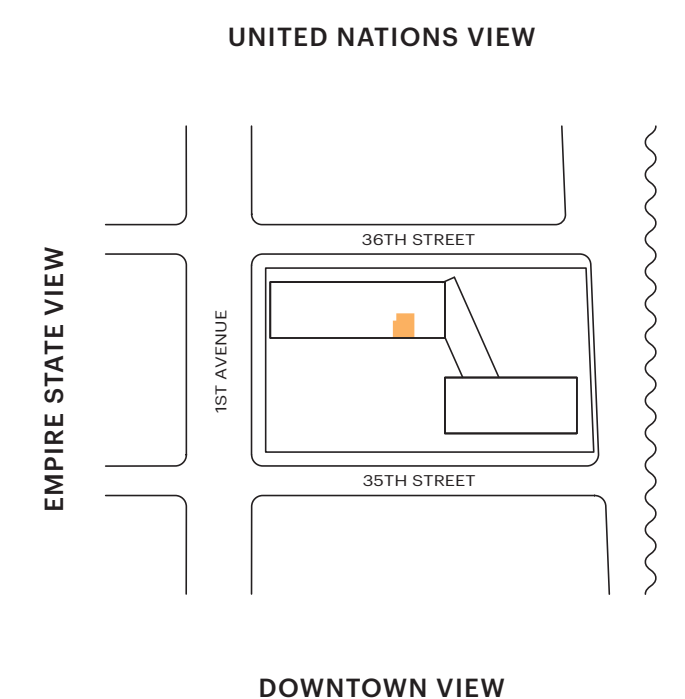
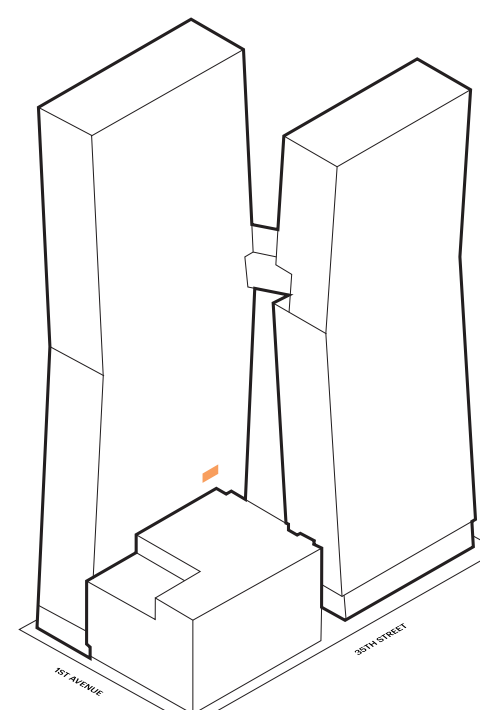
###### On the Ground:

- Landscaped park and fountain
- Curated marketplace and restaurant
- The Underground Speakeasy
- Virtual concierge service
- Sheltered porte cochère and on-site parking with valet services
- Bicycle storage
- Resident storage

\*Membership information available upon request



DOWNTOWN VIEW



DOWNTOWN VIEW

**LEASING GALLERY**  
626 1ST AVE. NYC 10016  
T: 212-686-0626 E: INFO@AMERICANCOPPER.NYC  
AMERICANCOPPER.NYC

ALL DIMENSIONS ARE APPROXIMATE AND SUBJECT TO NORMAL CONSTRUCTION VARIANCES AND TOLERANCES.